



**STAGE 1:
The Track**

**The Track:
Auto Modelbouw Club Apeldoorn (AMCA)
Address:**

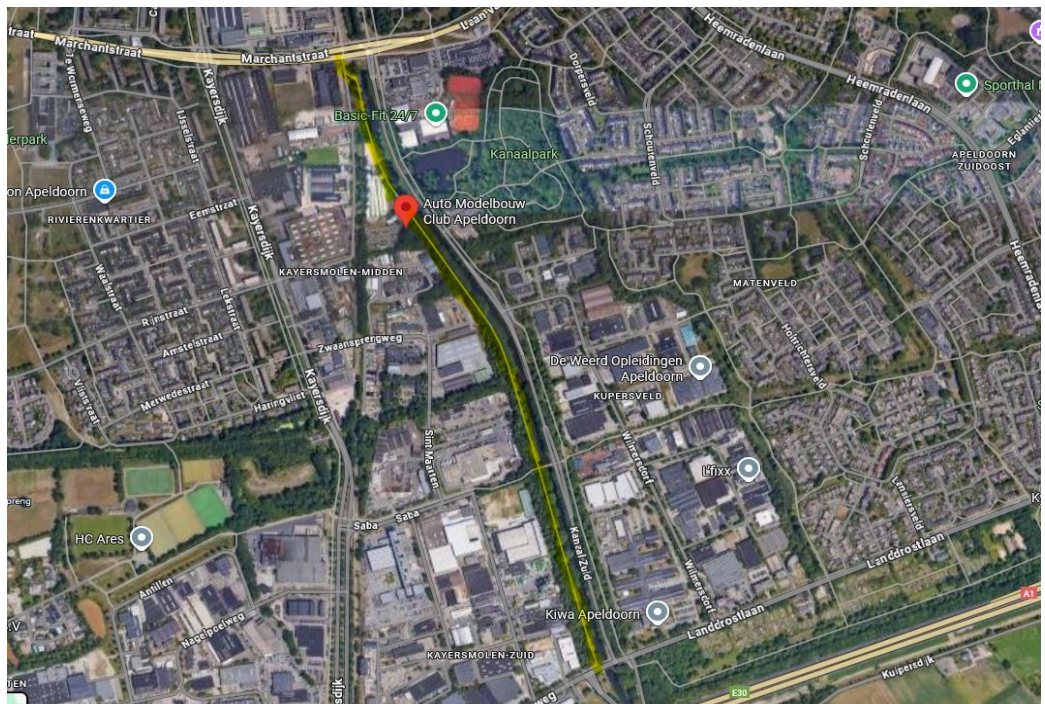
**Kanaal Zuid 134, 7332 BD Apeldoorn
The Netherlands**

AMCA
Auto Modelbouw Club Apeldoorn



Driving to the track:

The 'Kanaal zuid' is the main road; the track itself is located on a dirt road on the other side of the river. Access to the track is either from the south or north. Parking places are near to the track.



(Source: Google maps)

The club has a large canteen and seating area.
The paddock is covered and offers space for approx. 100 drivers at standing workstations, which are equipped with electricity and lighting. There is a toilet and a separate grinding area in the paddock.



The paddock (Source: AMCA Facebook)



The paddock (Source: AMCA Facebook)



There is an LED scoreboard at the track that displays the rankings, times and average speeds.



STAGE 2:
The Rules/ Time shedule

Technical Rules

LMP1 (Modified)

Motor:
540 size, no limit.

ESC:
No restrictions.

Weight:
Minimum weight: 1200 grams including transponder

LMP2 (Stock)

Motor:
540 size, 13.5 Turns or more (i.e. 17.5 Turns), according to the EFRA-motor lists.

ESC:
Blinky-mode.
Note: for wet races it is allowed to demonstrate blinky-mode using software settings, or run sensorless. If sensorless is run in a wet race, the ESC does not need to blink.

Weight:
Minimum weight: 950 g (till 205mm width) including transponder
1050 g (from 205mm width) including transponder

All classes

Battery:
All regularly available 2S hardcase batteries are allowed. The batteries shall be handled according to the manufacturer's recommendations. Warming of the batteries with external heating devices or similar is not allowed.

Body:
Group C, LeMans, Prototype. Next to these, for LMP2 (Stock): WorldGT-Karosserien.

Charger and charging and discharging setting:

Because of safety reasons only suitable chargers shall be used. For all batteries the charging recommendations of the manufacturer should be followed. When using a Lipo battery, a balancer and Lipo safety are to be used. The maximum allowed charging end voltage of 8.40V shall not be exceeded during the race. The measuring device of the technical inspection is to be used as reference.

Maximum charging voltage: 8.40V.
Maximum charge current: 12.0A.
Maximum discharge current: 20A.

Chassis:
Direct-drive over the rear axle (Differential allowed),
Max. length total 560 mm.
Wheelbase between 228 and 280 mm.
Width LMP1 und LMP2: maximum 250 mm.

Tires/wheels:
Foam tires, any compound.
Front wheels Pro10- / Scale (200 mm Nitro)-rear wheels Pro10-conform.

Traction compounds:
Only DMC-allowed traction compounds (such as sun screen lotion) are allowed. Ski wax or similar is not allowed.

Traction copound:

Nr.:	BestellNr. / Artikel- nummer	Bezeichnung	Hersteller / Lieferant / Vertrieb	Empfehlung Hersteller			
				Indoor	Outdoor	Hohlkammer Reifen	Moosgummi Reifen
1	65011	LRP TopGrip Carpet 2	LRP electronic GmbH, 73614 Schondorf	X	X	X	X
2	65012	LRP TopGrip Carpet 3	LRP electronic GmbH, 73614 Schondorf	X	X	X	X
3	96010	NOSRAM Traction additive carpet	LRP electronic GmbH, 73614 Schondorf	X		X	
4	MOB1000	Speedtech Foam Liquid	Speedtech RC Germany, 52538 Gangelt				X
5	C6400	CS High Grip	CS-Electronic GmbH, 85540 Haar bei München	X		x	x
6	C6460	CS Speed Grip	CS-Electronic GmbH, 85540 Haar bei München	X		x	x
7	C6500	CS High Grip Asphalt	CS-Electronic GmbH, 85540 Haar bei München		X	x	x
8	MAX-08-001	<i>MXLR SideBite R1 Rubber Tire Additive</i>	<i>RC-KleinKram Stefan Klein, 57518 Alsdorf</i>	X	X	X	
9	MAX-08-002	<i>MXLR SideBite F1 Foam Tire Additive</i>	<i>RC-KleinKram Stefan Klein, 57518 Alsdorf</i>	X	X		X

Motorlist can be found on the official EFRA Homepage:

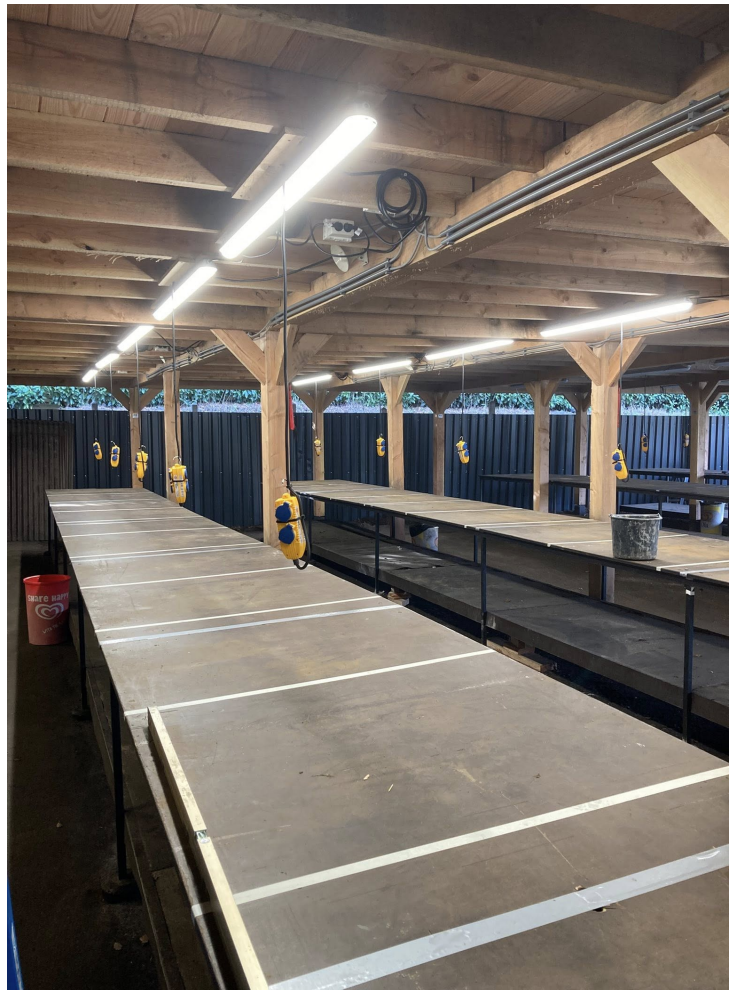
<https://www.efra.ws/homologation/>



STAGE 3:
All about the Race

NEW Paddock!

The club has refurbished its paddock with new tables. All you need now is a chair and a multi-socket adapter for your working place.



The new paddock

The Entry

The entry will open Sunday 12th of April via myrcm.ch

After the entry you have to pay the entry fee by bank transfer (**no** Paypal) to the club.

Before that your name will be on the waiting list. After successful payment (will be checked 2-3 times per week) you moved to the entrylist.

The entry fee will be **50€** and included following:

- Friday Practise
- Race on Saturday + Sunday
- BBQ Dinner + 1 softdrink Saturday Evening
- 2€ for the RC Lemans Series (Homepage + Organisation + Trophies)

Camping + Hotel

Sleeping + camping at the track is **not** possible!
There are some Hotels and Campingplaces near the track

Hotels:

- Fletcher Hotel-Restaurant Het Veluwe Bos 3*** ~ 99€ ~ 5,2km
- Hotel et le Café de Paris 3*** ~173€ ~ 4,6km
- Fletcher Hotel-Restaurant Apeldoorn 3*** ~ 119€ ~ 7,6km

Prices are approximate and based on a double room for two people per night

Camping:

- Ardoer camping Bosgraaf ~ 7,2km
- Camping Vinkenkamp B.V. ~6,8km

Supporting programme

On Saturday evening, there will be a BBQ for everyone, during which a big raffle with prizes will be held.

We would like to thank the following sponsors for the raffle and the Trophys:

